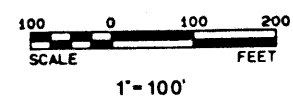


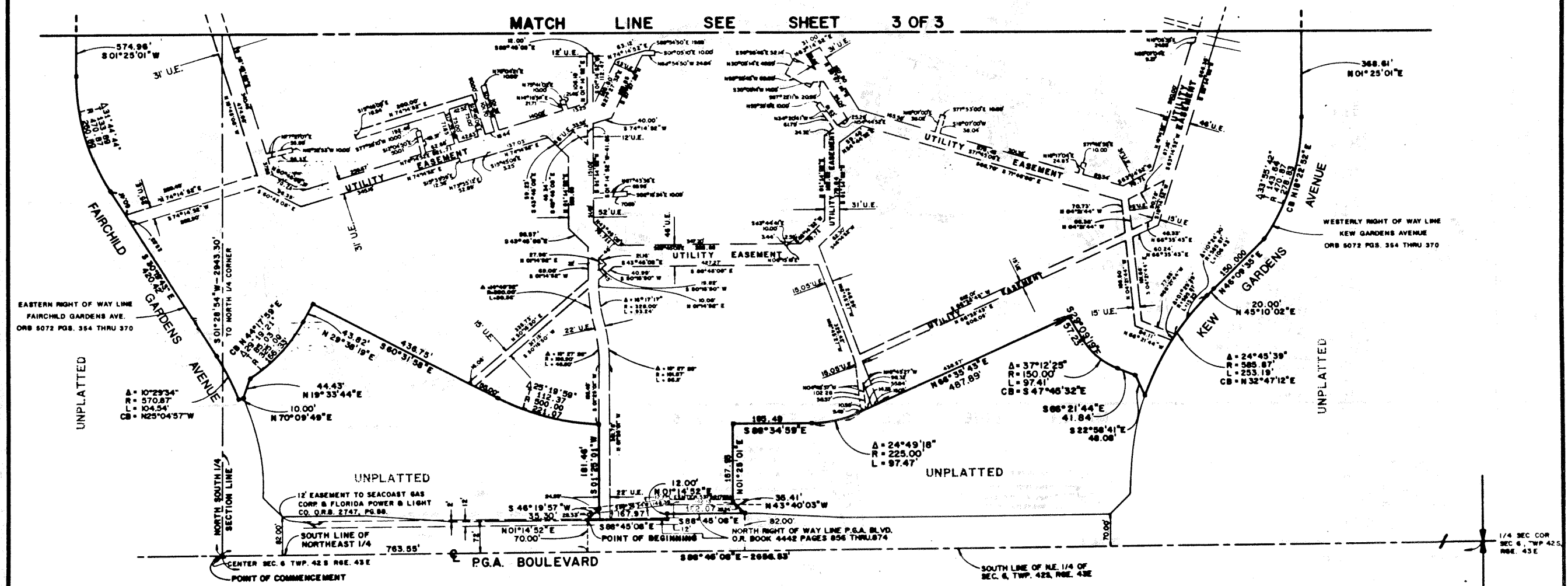
PLAT OF  
**THE GARDENS MALL**  
BEING IN SECTION 6, TOWNSHIP 42 SOUTH, RANGE 43 EAST  
CITY OF PALM BEACH GARDENS  
PALM BEACH COUNTY, FLORIDA

SHEET 2 OF 3 SHEETS  
AUGUST 1992

**Hutcheon Engineers**  
CIVIL ENGINEERS & SURVEYORS  
1401 S. PALM BEACH BLVD.  
PALM BEACH, FLORIDA 33480  
PHONE (561) 845-5522



- LEGEND**
- - INDICATES PERMANENT REFERENCE MONUMENT FROM SET "BLS 4199"
  - U.E. - INDICATES UTILITY EASEMENT
  - ORB - OFFICIAL RECORD BOOK
  - SEC - SECTION
  - TWP - TOWNSHIP
  - RGE - RANGE
  - FP&L - FLORIDA POWER & LIGHT



NOTE Bearings shown herein are based on the South line of the Northeast 1/4 of Section 6, Township 42 South, Range 43 East, as South 88°45'00" East.